

CTSB Series of Split Core Current Transformers

The YUANXING **CTSB** series of split core style current transformers are designed for fast and easy installation. The split core design permits non-contact current measurements without requiring that the primary wire be taken offline and disconnected for CT installation. This method permits a safer, easier and portable current measurement.

Features:

- High accuracy and reliability.
- 5 standard sizes.
- Split core design; safer, easier installation, portable.

Specifications:

- Frequency: 50/ 60Hz.
- Maximum voltage: 720VAC.
- Output: 5A or 1A at rated primary current.
- Accuracy Class: 0.5, 1.0, 3.0 (#1)
- Phase Angle: less than 2 degrees at 50% of rated current.
- Load @ rated current: 1VA to 30VA depending upon model.
- Operating Temperature: -15°C to +60°C



- Surge withstand (RMS): 3,000 VAC
- Case material: PBT Resin UL flame retardant rating 94-VO
- Construction: Epoxy encapsulated housing
- RoHS compliant

NOTE: #1 – IEC 60044-1

Models:

Model	Nominal Current Ratio	Burden (VA)			Linearity Range	Opening mm (in)	WT kg
		Accuracy Class					
		0.5	1.0	3.0			
CTSB0203-	100:5	-	-	1.5	10%-130% of rated current	20 (.79") x 30 (1.18")	0.75
	150:5	-	-	2.0			
	200:5	-	1.5	2.5			
	250:5	-	2.0	4.0			
	300:5	1.5	4.0	6.0			
	400:5	2.5	6.0	10.0			

ZIBO YUANXING Electronics Co., LTD

Yifan Road
 Science & Technology Industry Park
 Zhangdian, Zibo
 Shandong Province 255095, P.R.C.
 Telephone: 0086-533- 3818450
 Fax: 0086-533-3814724
sales@yuanxing.net
www.yuanxing.net

T.I. Chen Associates

1101 N. 5th Street
 Tacoma, WA 98403-1610
 USA
 Telephone: 253.678.2661
 FAX: 206.350.6482
tim@tichenassociates.com

CTSB Series of Split Core Current Transformers

Model	Nominal Current Ratio	Burden (VA)			Linearity Range	Opening mm (in)	WT kg
		Accuracy Class					
		0.5	1.0	3.0			
CTSB0508-	250:5	1.0	2.0	4.0	10%-130% of rated current	50 (1.97") x 80 (3.15")	0.90
	300:5	1.5	3.0	6.0			
	400:5	2.5	3.0	10.0			
	500:5	2.5	5.0	15.0			
	600:5	2.5	5.0	17.5			
	750:5	3.0	6.0	18.0			
	800:5	3.0	7.0	18.0			
	1000:5	5.0	10.0	20.0			

Model	Nominal Current Ratio	Burden (VA)			Linearity Range	Opening mm (in)	WT kg
		Accuracy Class					
		0.5	1.0	3.0			
CTSB0808-	250:5	1.0	2.0	4.0	10%-130% of rated current	80 (3.15") x 80 (3.15")	1.05
	300:5	1.5	3.0	6.0			
	400:5	1.5	3.0	6.0			
	500:5	2.5	5.0	15.0			
	600:5	2.5	5.0	17.5			
	750:5	3.0	6.0	18.0			
	800:5	3.0	7.0	18.0			
	1000:5	5.0	10.0	20.0			

ZIBO YUANXING Electronics Co., LTD

Yifan Road
 Science & Technology Industry Park
 Zhangdian, Zibo
 Shandong Province 255095, P.R.C.
 Telephone: 0086-533- 3818450
 Fax: 0086-533-3814724
sales@yuanxing.net
www.yuanxing.net

T.I. Chen Associates

1101 N. 5th Street
 Tacoma, WA 98403-1610
 USA
 Telephone: 253.678.2661
 FAX: 206.350.6482
tim@tichenassociates.com

CTSB Series of Split Core Current Transformers

Model	Nominal Current Ratio	Burden (VA)			Linearity Range	Opening mm (in)	WT kg
		Accuracy Class					
		0.5	1.0	3.0			
CTSB0812-	500:5		4.0	12.0	10%-130% of rated current	80 (3.15") x 120 (4.72")	1.25
	600:5		5.0	14.0			
	750:5	2.5	6.0	17.0			
	800:5	3.0	7.0	18.0			
	1000:5	5.0	9.0	20.0			
	1200:5	6.0	11.0	24.0			
	1250:5	7.0	15.0	28.0			
	1500:5	8.0	17.0	30.0			

Model	Nominal Current Ratio	Burden (VA)			Linearity Range	Opening mm (in)	WT kg
		Accuracy Class					
		0.5	1.0	3.0			
CTSB0816-	1000:5	10.0	15.0	20.0	10%-130% of rated current	80 (3.15") x 160 (6.30")	4.30
	1500:5	15.0	20.0	25.0			
	2000:5	15.0	20.0	25.0			
	2500:5	15.0	20.0	25.0			
	3000:5	20.0	25.0	30.0			
	4000:5	20.0	25.0	30.0			
	5000:5	20.0	25.0	30.0			

Custom split-core current transformer designs are available to meet the specific application requirements. Any of these models can be custom engineered for;

- Primary to secondary ratio,
- Lead length, lead termination, etc.

For a no obligation technical evaluation, please provide the specific performance requirements to engineering@tichenassociates.com or the address below.

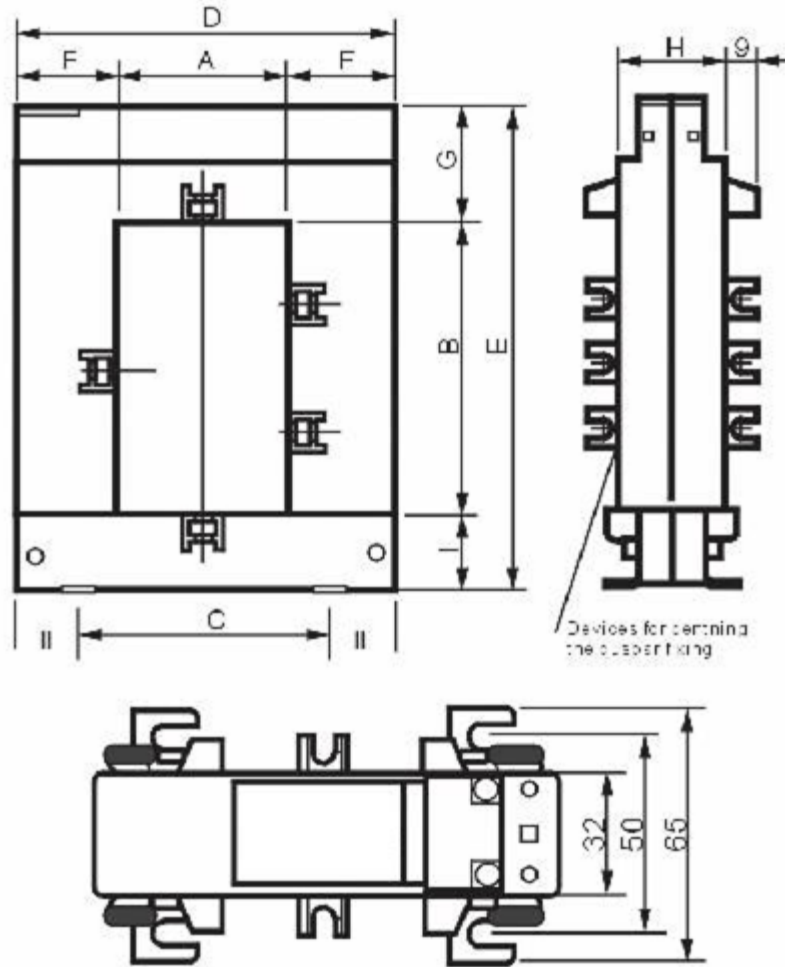
ZIBO YUANXING Electronics Co., LTD

Yifan Road
 Science & Technology Industry Park
 Zhangdian, Zibo
 Shandong Province 255095, P.R.C.
 Telephone: 0086-533- 3818450
 Fax: 0086-533-3814724
sales@yuanxing.net
www.yuanxing.net

T.I. Chen Associates

1101 N. 5th Street
 Tacoma, WA 98403-1610
 USA
 Telephone: 253.678.2661
 FAX: 206.350.6482
tim@tichenassociates.com

Outline Drawing:



Outline Dimension:

Model	Dimension mm(inch)									Weight (Kg)
	A	B	C	D	E	F	G	H	I	
CTSB0203-	20 (0.8")	30 (1.2")	51 (2.0")	89 (3.5")	111 (4.4")	34 (1.3")	47 (1.9")	40 (1.6")	32 (1.3)	0.75
CTSB0508-	50 (2.0")	80 (3.1")	78 (3.1")	114 (4.5")	145 (5.7")	32 (1.3")	32 (1.3")	32 (1.3")	33 (1.3)	0.90
CTSB0808-	80 (3.1")	80 (3.1")	108 (4.3")	144 (5.7")	145 (5.7")	32 (1.3")	32 (1.3")	32 (1.3")	33 (1.3)	1.05
CTSB0812-	80 (3.1")	120 (4.7")	108 (4.3")	144 (5.7")	185 (7.3")	32 (1.3")	32 (1.3")	32 (1.3")	33 (1.3)	1.25
CTSB0816-	80 (3.1")	160 (6.3")	120 (4.7")	184 (7.2")	245 (9.6")	52 (2.0")	52 (2.0")	52 (2.0")	38 (1.5)	4.30

ZIBO YUANXING Electronics Co., LTD

Yifan Road
 Science & Technology Industry Park
 Zhangdian, Zibo
 Shandong Province 255095, P.R.C.
 Telephone: 0086-533- 3818450
 Fax: 0086-533-3814724
sales@yuanxing.net
www.yuanxing.net

T.I. Chen Associates

1101 N. 5th Street
 Tacoma, WA 98403-1610
 USA
 Telephone: 253.678.2661
 FAX: 206.350.6482
tjm@tichenassociates.com